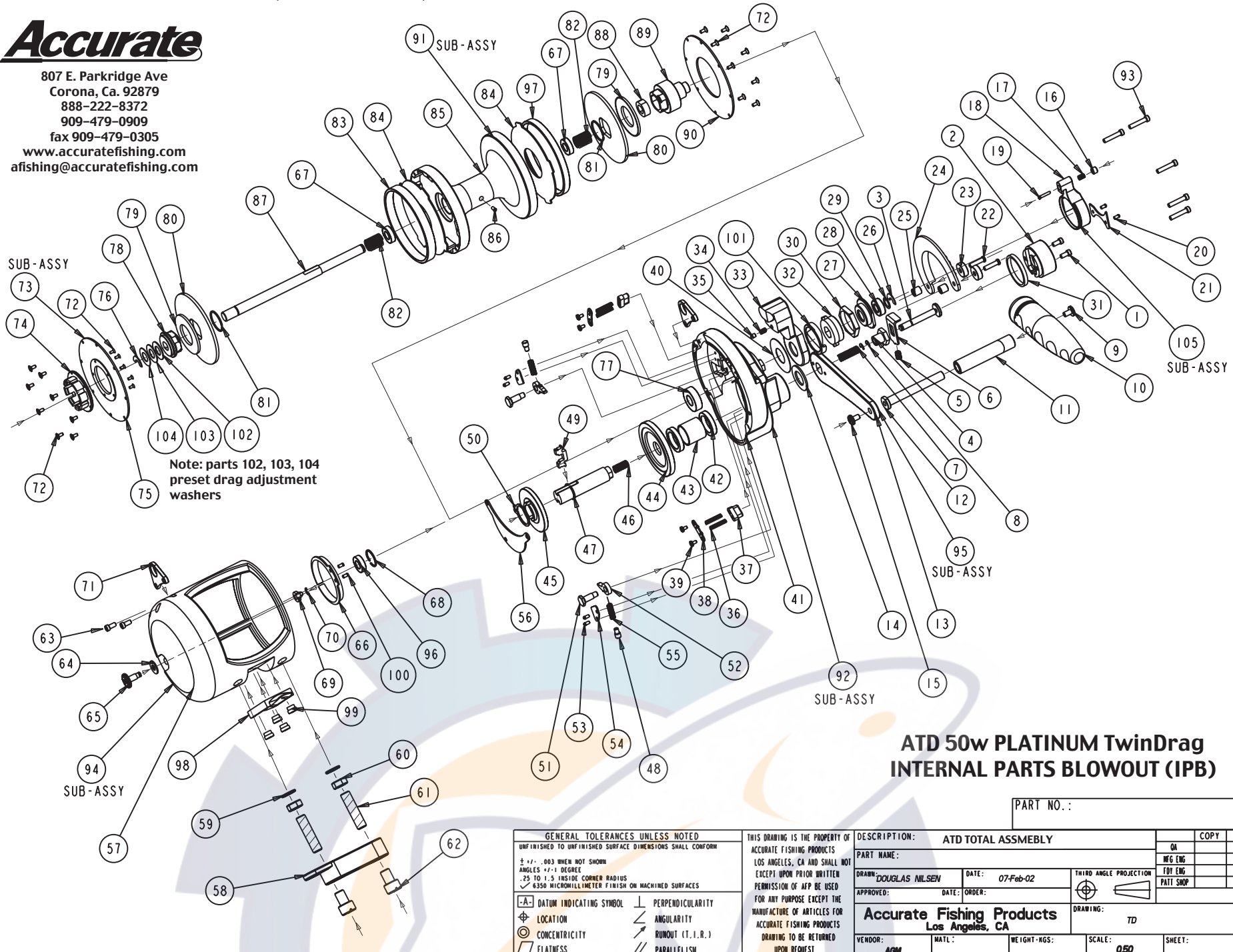


Accurate

807 E. Parkridge Ave
 Corona, Ca. 92879
 888-222-8372
 909-479-0909
 fax 909-479-0305
 www.accuratefishing.com
 afishing@accuratefishing.com



ATD 50W BOM

No.	COMPONENT NAME	QTY	PART No.	No.	COMPONENT NAME	QTY	PART No.
1	GEAR SHIFT COVER SCREW	2	L-1380	54	ANTI-REVERSE DOG SPRING COVER	2	L-846
2	GEAR SHIFT COVER	1	L-790	55	ANTI-REVERSE DOG SPRING	2	L-1372
3	GEAR SHIFT SHAFT	1	L-776	56	GEAR COVER	1	L-876
4	HANDLE SCREW	1	L-858	57	FRAME	1	L-1066
5	GEAR SHIFT SLIDE SPRING	1	L-1338	58	BASE CLAMP	1	L-1374
6	GEAR SHIFT SLIDE	1	L-812	59	BASE CLAMP STUD WASHER	2	L-1560
7	GEAR SHIFT SHAFT SPRING #1	1	L-7398	60	BASE CLAMP STUD NUT	2	L-1376
8	GEAR SHIFT SHAFT RETAINERS	2	L-1342	61	BASE CLAMP STUD	2	750
9	HANDLE PIN SCREW	1	B-1190	62	BASE CLAMP SLEEVE NUT	2	L-1378
10	HANDLE KNOB	1	L-838	63	FRAME LUG SCREWS C/S	2	L-1380
11	HANDLE KNOB HUB	1	AR-50040	64	CLICKER KNOB WASHER	1	B-1126
12	HANDLE KNOB PIN	1	L-932	65	CLICKER KNOB	1	L-319
13	HANDLE ARM	1	L-922	66	CLICKER RING	1	623
14	HANDLE WASHER	1	L-866	67	SPOOL BEARING	2	L-1536
15	HANDLE ARM SCREW	1	B-1190	68	FRAME BEARING RETAINER	1	L-1144
16	PRESET ARM LOCK BUTTON	1	L-870	69	CLICKER DOG	1	36-114
17	PRESET ARM LOCK BUTTON SPRING	1	L-1362	70	CLICKER DOG RETAINER	1	B-1298
18	PRESET ARM	1	L-804	71	FRAME LUGS	2	L-772
19	PRESET ARM LOCK BUTTON SCREW	1	L-1350	72	SPOOL COVER SCREWS	21	L-1386
20	PRESET ARM CLIP SCREW	2	L-1352	73	CLICKER SPOOL COVER SUB-ASSY	1	L-1572
21	PRESET ARM CLIP	1	L-768	74	CLICKER	1	L-868
22	PRESET ARM SUPPORT SCREW	2	L-1354	75	SPOOL COVER C/S W/O CLICKER	1	L-890
23	CUSHION STOP	2	L-774	76	SPOOL SHAFT RETAINER C/S	1	L-1548
24	PRESET ARM SUPPORT	1	L-746	77	GEAR SIDEPLATE BEARING	1	L-1540
25	PRESET ARM SUPPORT SPACER	2	L-930	78	CLICKER DRAG CAP	1	L-926
26	SPOOL SHAFT RETAINER G/S	1	L-1750	79	BEVEL WASHER	2	L-794
27	TENSION CAM BEARING WASHER	1	L-762	80	TITANIUM DRAG WASHER	2	L-944
28	TENSION CAM BEARING	1	L-1358	81	TITANIUM DRAG WASHER RETAINER	2	L-1108
29	TENSION CAM RETAINER WASHER	1	L-786	82	SPOOL SHAFT SPRING	2	L-954
30	TENSION CAM NUT	1	L-758	83	FIBER RING C/S	1	L-1166
31	GEAR SHIFT COVER SPACER	1	L-1518	84	FIBER WASHER	2	L-940
32	TENSION CAM	1	L-814	85	SPOOL	1	L-902
33	MAIN LEVER ARM	1	L-920	86	SPOOL LINE SCREW	1	B-1290
34	MAIN LEVER ARM PIN SPRING	1	L-1362	87	SPOOL SHAFT	1	L-918
35	MAIN LEVER ARM PIN	1	L-1638	88	PINION BUSHING	1	L-948
36	STRIKE BUTTON SPRING	2	70080s	89	PINION GEAR	1	L-916
37	STRIKE BUTTON	2	L-832	90	SPOOL COVER G/S	1	L-888
38	STRIKE BUTTON COVER	2	L-1050	91	SPOOL SUB-ASSY	1	L-1856
39	STRIKE BUTTON SCREWS	4	B-1290	92	SIDEPLATE SUB-ASSY	1	L-1850
40	MAIN LEVER ARM TEFLON WASHER	1	L-792	93	SIDEPLATE SCREWS	5	L-1336
41	GEAR SIDEPLATE	1	L-1106	94	FRAME SUB-ASSY	1	L-1854
42	GEAR SHAFT HANDLE BEARING	2	L-1542	95	HANDLE SUB-ASSY	1	L-1852
43	GEAR SHAFT BEARINGS SPACER	1	L-958	96	FRAME BEARING	1	L-1534
44	HIGH SPEED MAIN GEAR	1	L-862	97	FIBER RING G/S	1	L-1150
45	LOW SPEED MAIN GEAR	1	L-882	98	FRAME FOOT	1	L-1002
46	GEAR SHAFT SPRING (INSIDE)	1	L-1400	99	FRAME FOOT SCREWS	4	B-1278
47	GEAR SHAFT	1	L-810	100	CLICKER RING SCREWS	2	B-1290
48	ANTI-REVERSE DOG SPRING POST	2	L-1412	101	TENSION CAM TRACK	1	L-764
49	GEAR SHIFTER	1	L-766	102	CLICKER DRAG CAP WASHER .020	1	L-1192
50	GEAR SHIFTER RETAINER	1	L-1370	103	CLICKER DRAG CAP WASHER .025	1	L-1778
51	ANTI-REVERSE DOG SCREW	2	L-960	104	CLICKER DRAG CAP WASHER .015	1	L-942
52	ANTI-REVERSE DOG	2	L-850	105	PRESET LEVER SUB-ASSY	1	L-1832
53	ANTI-REVERSE DOG SPRING COVER SCREW	4	B-1290				